

Technical Data Sheet

Reagent: Anti-*Mamu A*01*- allomorph-specific

Part number: PR-1102

Species/Isotype: Rhesus/IgG1 κ - recombinant

Unit size: 50 tests

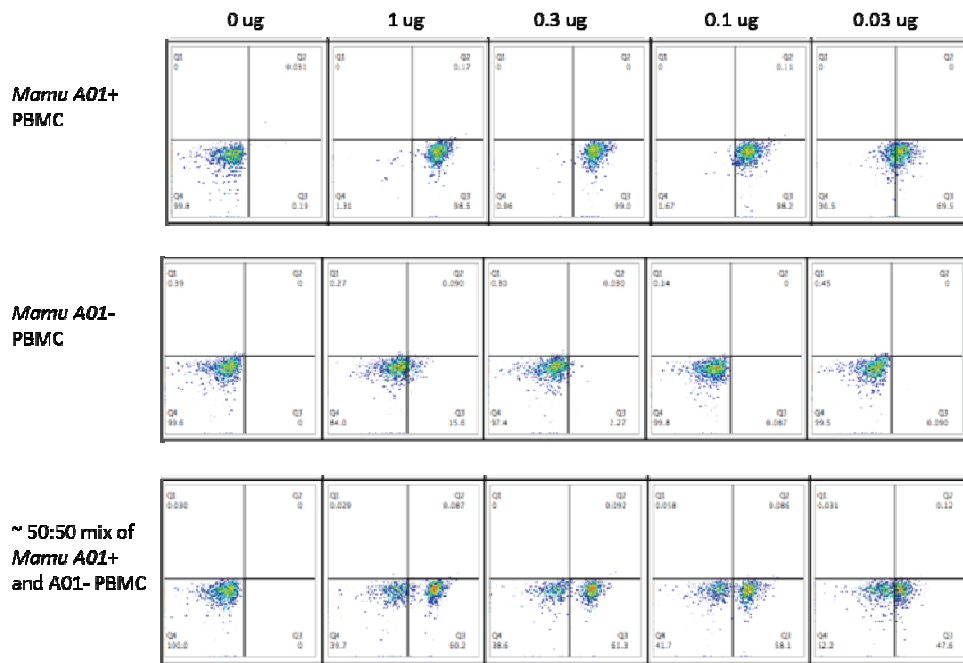
Test size: 5 ul (0.5 ug)

Description: Recombinant antibody derived from a rhesus phage display library that was alloimmunized with *Mamu A*01*+ cells. Antibody variable regions are expressed as full length rhesus immunoglobulin G.

Conjugation: R-phycoerythrin

Source: The unique *MamuA*01*-specific variable regions of this antibody were provided by Dr. David O'Connor, Wisconsin National primate Research Center

Sample staining:



For Research Use Only – All reagents are to be used in accordance with the terms of the Resource registration agreement.



NIH NONHUMAN PRIMATE REAGENT RESOURCE

www.nhpreagents.org

MassBiologics

University of Massachusetts Medical School

460 Walk Hill Street

Boston, MA 02126

617-474-3261



Sponsored by the National Institute of Allergy and Infectious Diseases, and Office of Research Infrastructure Programs, NIH