

Technical Note
TN2005-04

Technique: Identifying TCR γ - δ cells in macaque monkeys by flow cytometry

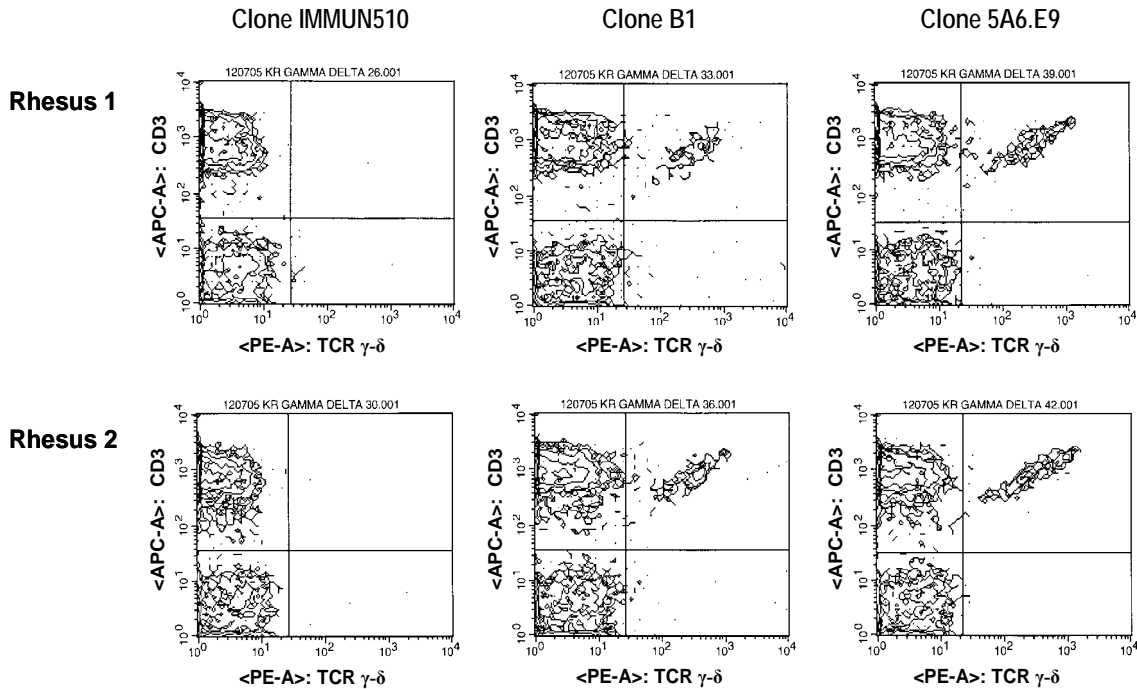
Description: Three anti-human TCR γ - δ monoclonal antibodies were tested for reactivity with rhesus macaque PBMC.

Reagents:	Manufacturer	Clone	Result
	Beckman Coulter	IMMU510	Not reactive
	BioCarta	5A6.E9	Reactive*
	BD Bioscience	B1	Reactive*

* Reactivity with all isoforms of macaque TCR γ - δ has not been determined.

Method: Rhesus whole blood was stained with PE-conjugated anti-TCR γ - δ antibodies and anti-CD3-APC.

Example: TCR γ - δ staining of rhesus macaque lymphocytes



NIH Nonhuman Primate Reagent Resource
<http://nhpreagents.bidmc.harvard.edu>
 Beth Israel Deaconess Medical Center
 Research East 113
 330 Brookline Avenue
 Boston, MA 02215
 617-667-4583