

Technical Note
TN2006-01

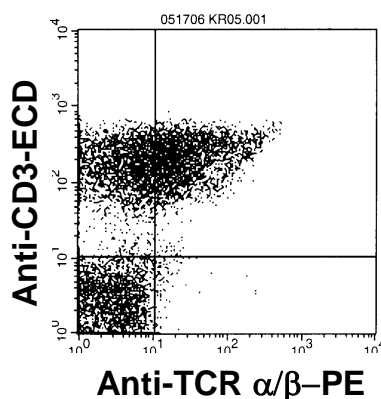
Technique: An antibody reactive with macaque TCR- $\alpha\beta$

Description: An antibody against rat TCR $\alpha\beta$ was tested for reactivity with rhesus T cells.

Reagents:	Manufacturer	Clone	Result
	AbD Serotec	R73	Reactive

Method: Rhesus whole blood was stained with PE-conjugated anti-TCR $\alpha\beta$ antibody and anti-CD3-APC.

Example: TCR $\alpha\beta$ staining of rhesus macaque lymphocytes



NIH NONHUMAN PRIMATE REAGENT RESOURCE

<http://nhpreagents.bidmc.harvard.edu>

Beth Israel Deaconess Medical Center
Research East 113
330 Brookline Avenue
Boston, MA 02215
617-667-4583