

Technical Data Sheet

Reagent: Mouse anti-rhesus J-chain
Antibody: CA1L 33e1 A1a3
Species/Isotype: Mouse/IgG1 κ

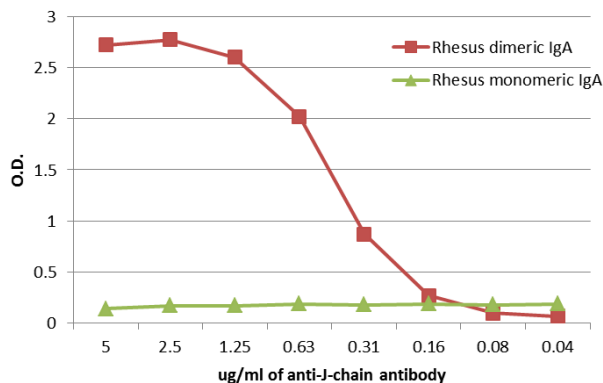
Specifications:

Part No.	Form	Conc.	Unit size	Buffer	Working dilution
PR-3310	Pure	1 mg/ml	100 μ g	PBS pH 7.2, azide-free	n/a
PR-3314	Biotin			Coming soon	
PR-3316	HRP			Coming soon	

Description: CA1L 33e1 A1a3 was generated by immunizing mice with recombinant human J-chain protein, and screened against human and rhesus dimeric IgA.

Species specificity: Reacts with human and rhesus J-chain within dimeric IgA. Other species not tested.

Antigen specificity: Indirect ELISA illustrating reactivity with dimeric IgA, but not monomer



For Research Use Only – All reagents are to be used in accordance with the terms of the Resource registration agreement.

NHP REAGENT RESOURCE
NIH NONHUMAN PRIMATE REAGENT RESOURCE
www.nhpreagents.org
MassBiologics
University of Massachusetts Medical School
460 Walk Hill Street
Boston, MA 02126
617-474-3261